

A photograph of a garden scene. In the foreground, there is a wooden chair on the left and a wooden table on the right. A large terracotta pot is visible on the right side. The background is filled with various plants, including purple flowers and green foliage. A white fence is visible in the background. The text "DAHL" is overlaid in a dark grey box in the upper center, and "GARDEN FURNITURE 2016" is overlaid in yellow text in the lower center.

DAHL

GARDEN
FURNITURE
2016

PLEASANT

DAHL

As a result of open-minded creative and innovative thinking, Dahl creates a new collection of outdoor furniture, that leaves it to the consumers' fantasy and imagination how to make use of the multifunction and seasoning furniture.

From dream society to the future creative and innovative society that opens up for peoples need of self-actualisation, we have thought of how to make our furniture, that meets today living.

As demand standard is enhancing, we have to think of how to make furniture to be more conformed to essence of living.

Dahl has set up own design department with internal designers, as well as contract designers from the Danish School of Architecture. Our designers have a long list of awards, based on a relatively young career



Design: FEM design Sarah Cramer & Anders Engholm - J1706B Side tables





CARMEL



MB2006 Sofa - Dahl design

ASHVILLE



Without hard work, nothing grows but weeds...



MB2005-1 LHF Sofa - Dahl design

MB2005-2 RHF Sofa - Dahl design

MAYVILLE



MB2003 Sofa - Dahl design

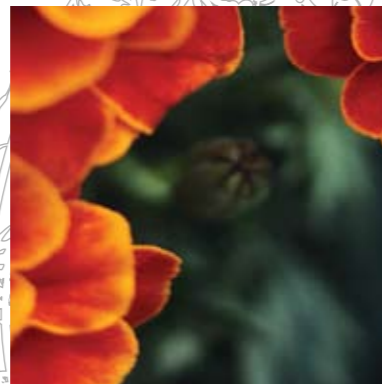
MB2002 Chair - Dahl design



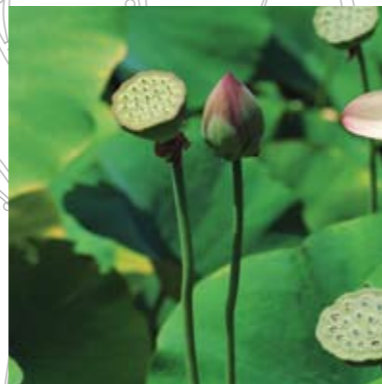
MB 6688 Sofa



MB 0046 Sofa



If you have a garden and a library, you have all you need...





J3394 Dining table



J3379 Dining table



CHAIRS



MB2001 Single chair



J1527 Dining chair



J1612 Dining chair



J1637 Dining chair

MACON



J1545-1 Rocking chair - Dahl design



J1545-2 Rocking chair - Dahl design



J5639 Set table - Dahl design



J5640 Set table - Dahl design



PLEASANT



J1706 Side table



J1706 A Side table



J1706 A Side table

Design: FEM design - Sarah Cramer og Anders Engholm

PLEASANT

Design: FEM design - Sarah Cramer og Anders Engholm



J1653 Leisure chair



J5638 Side tables



DAHL

Denmark office: Dyrehaven 10, 8653 Them, Denmark.
Hong-Kong Office: 17A-D, One Capital Place 18 Luard Road, Wanchai, Hong Kong.
| Tel.: 852-31010995 | Fax.: 852-31010906 | - Mail.: m-b@mail.dk
www.mbfurnitureltd.com

Copyright © 2015 All Rights Reserved.